

NIFTY PREDICTION: www.ritapandit25.in



9831695525.



@PANDIT INVEST.



@predictionnifty.

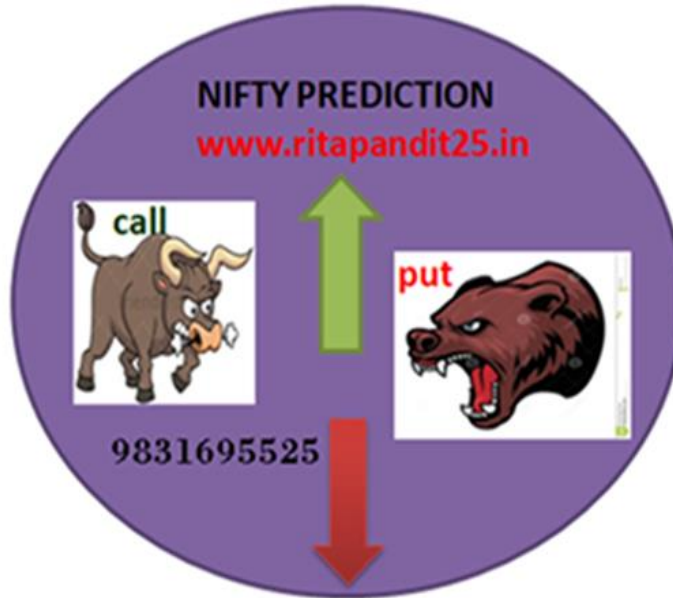


@niftyprediction

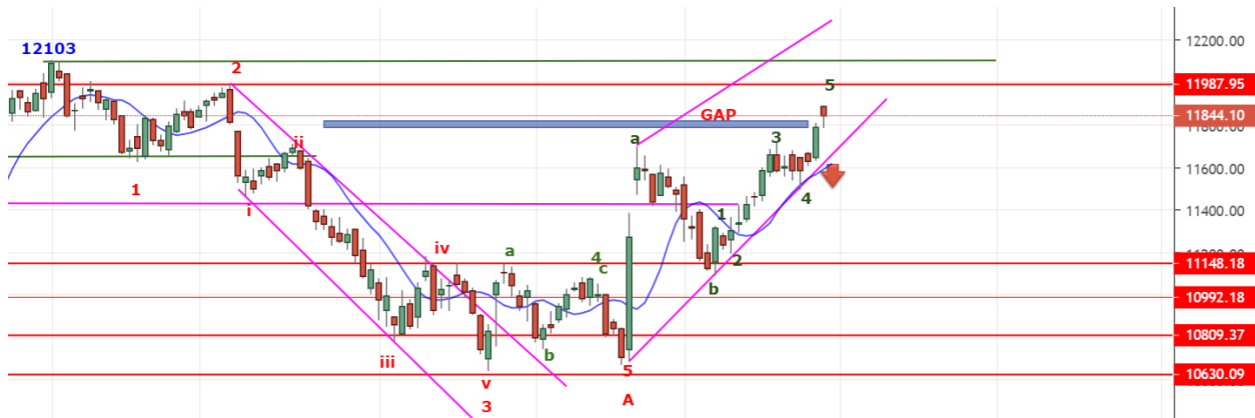
NIFTY PREDICTION FOR 31/10/2019:

NIFTY HOLDING 11817 CAN SEE 11905-11935. **TRADING BELOW 11810 CAN SEE 11770-11740 LEVELS.**

AS PER OPTION CHAIN EXPIRY ON UPPER SIDE 12000 AND LOWE SIDE 11800 LEVELS.



SAR: 11619 NS.



NIFTY PREDICTION: www.ritapandit25.in



9831695525.



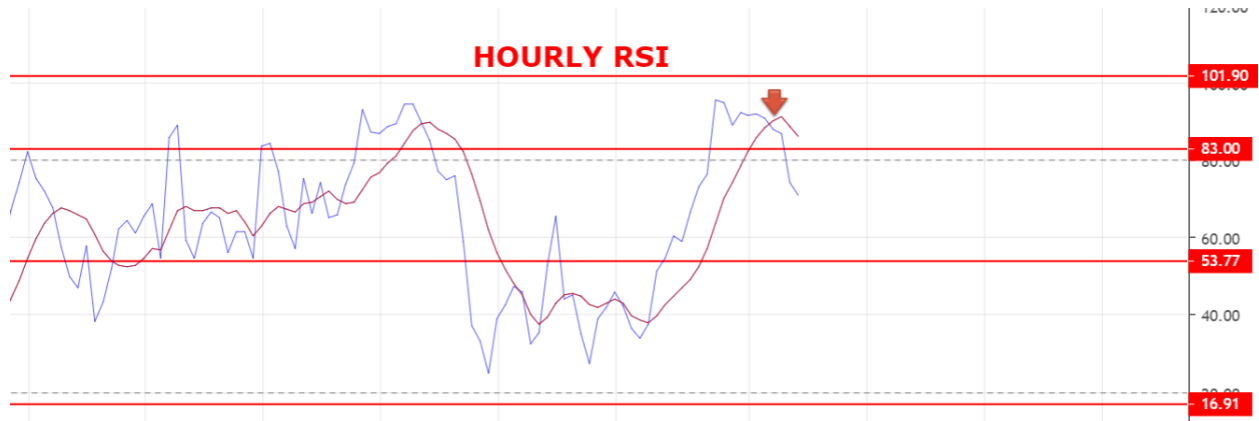
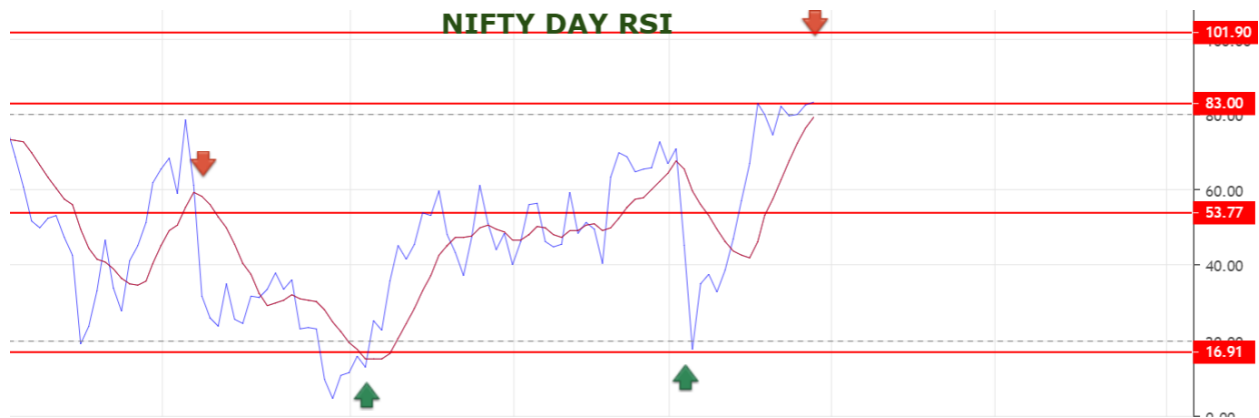
@PANDIT INVEST.



@predictionnifty.



@niftyprediction



STRONG ABOVE 11809 NS.

WEAK BELOW 11800 NS.

BULLISH ABOVE 11885 NS.

BEARISH BELOW 11740 NS.

SUPPORT: 11817 -11789-11765-11750-11737-11715.

NIFTY PREDICTION: www.ritapandit25.in



9831695525.



@PANDIT INVEST.



@predictionnifty.



@niftyprediction

RESISTANCE: 11880-11899-11905-11920-11944-11990.

NIFTY OPTION FOR 31/10/2019:

BUY 11900 CE 07 NOV@89+ STOP 79 TGT 97-105-111-118-124-139-148.

HOLDING 11900 CE STOP 70.

BUY 11800 PE 07 NOV@92+ STOP 80 TGT 103-108-117-127-137-145-150.

PE TO BUY BELOW 11817 NS, CE ABOVE 11870 NS.

DON'T BUY SPIKE PRICE MUST HOLD FEW SECOND ELIGIBILITY TO BUY CE/PE.

NOTE: EXPIRY DAY TRY TO AVOID TRADING.ALWAYS USE 50 % OF YOUR CAPITAL TO TRADE. Once we made Profit in Two or Third Trade Rs2000/5000 then Exit Trading for the Day. Over Trading and Greed results Losses.IN CASE OF LOSS MORE THAN 5000 EXIT TRADE FOR THE DAY. My work is to give call just ignore it if you made handsome profit for the day. ALWAYS KEEP STOP LOSS AND FOLLOW REENTER RULES.NEVER TRADE IN BULK QTY. MAX QTY 5 LOTS MIN 2 LOTS.